

TOP VIEW



FRONT VIEW

JEDEC SOLID STATE
PRODUCT OUTLINE
Copyright © 2022 JEDEC

THIS *REGISTERED OUTLINE* HAS BEEN PREPARED BY THE JEDEC JC-11 COMMITTEE
AND REFLECTS A PRODUCT WITH ANTICIPATED USAGE IN THE ELECTRONICS INDUSTRY;
CHANGES ARE LIKELY TO OCCUR

TITLE PLASTIC MULTI CONNECTOR
32 PIN, 1.00MM PITCH
19.35MM X 21.00MM SOCKET

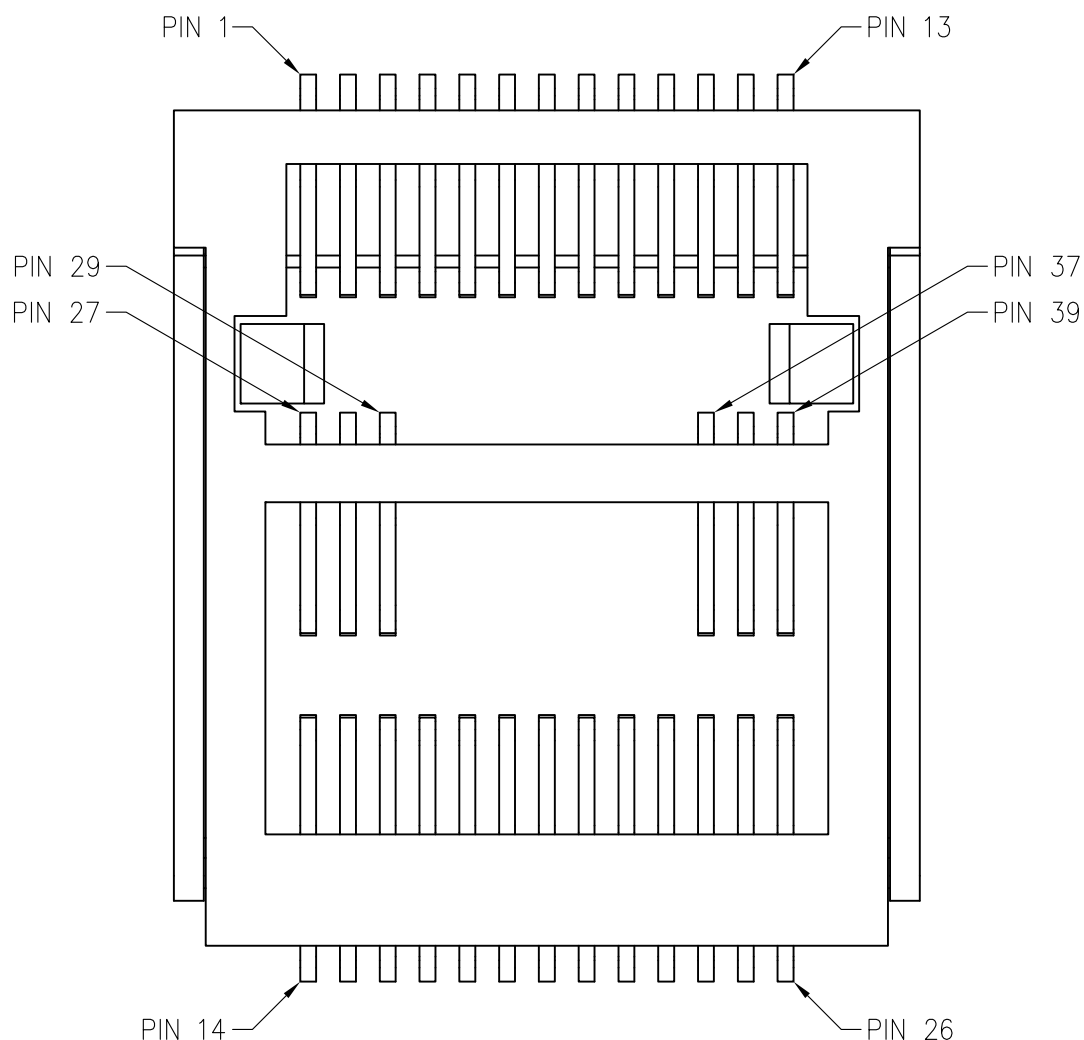
PACKAGE DESIGNATOR
PMXC-G32[39]_I1p0-
R19p35x21p0Z3p2-
N23p4T#

NUMBER
SO-031

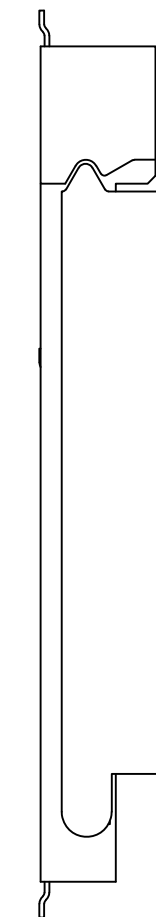
ISSUE
A

DATE
AUG 2022

SHEET
1 OF 5

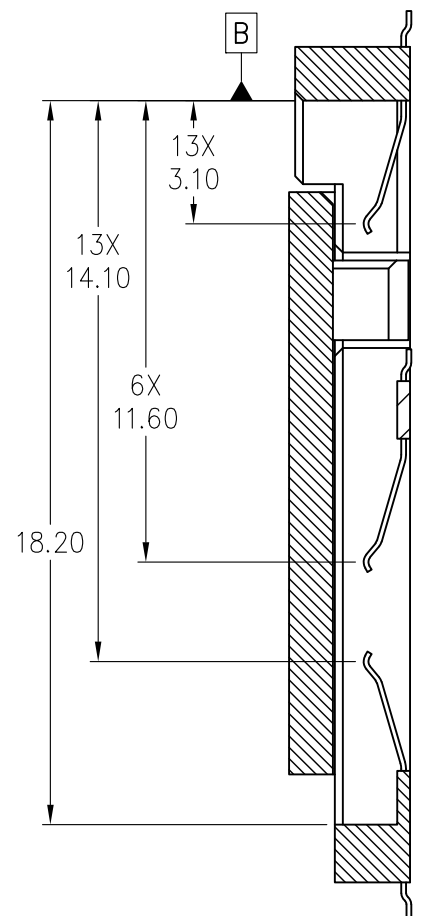
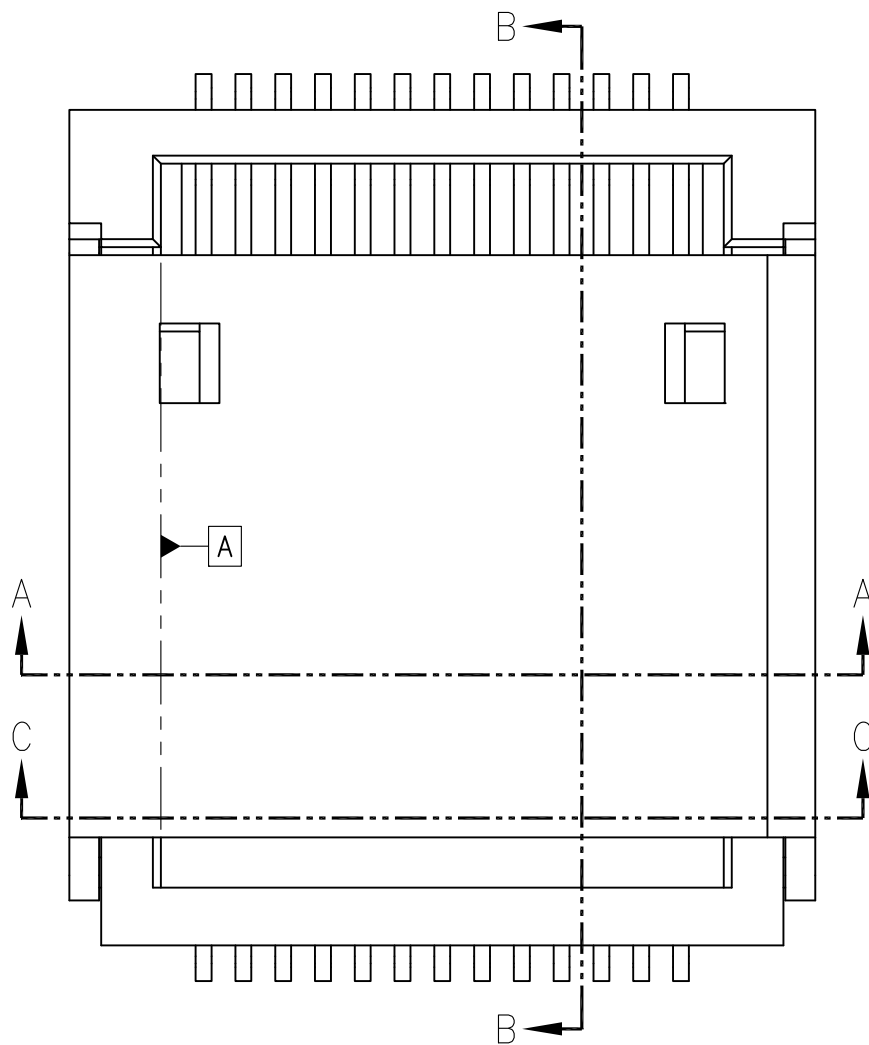


BOTTOM VIEW

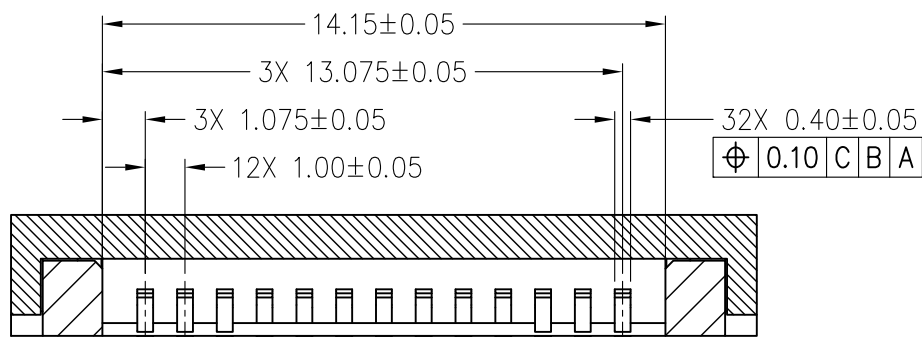


SIDE VIEW

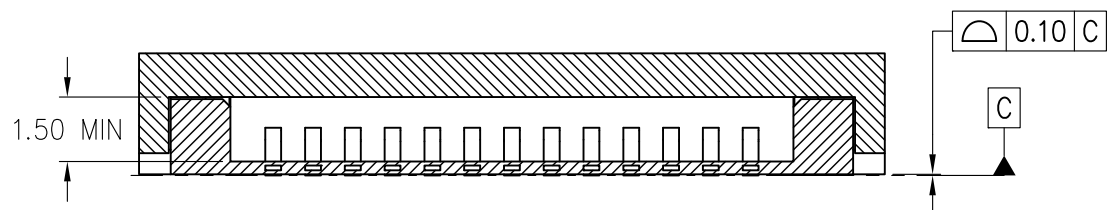
PIN 30 TO 36 ARE NOT POPULATED IN THIS CONNECTOR.
 PIN 29 AND 37 ARE RESERVES, SO POPULATING IN CONNECTOR IS OPTIONAL.



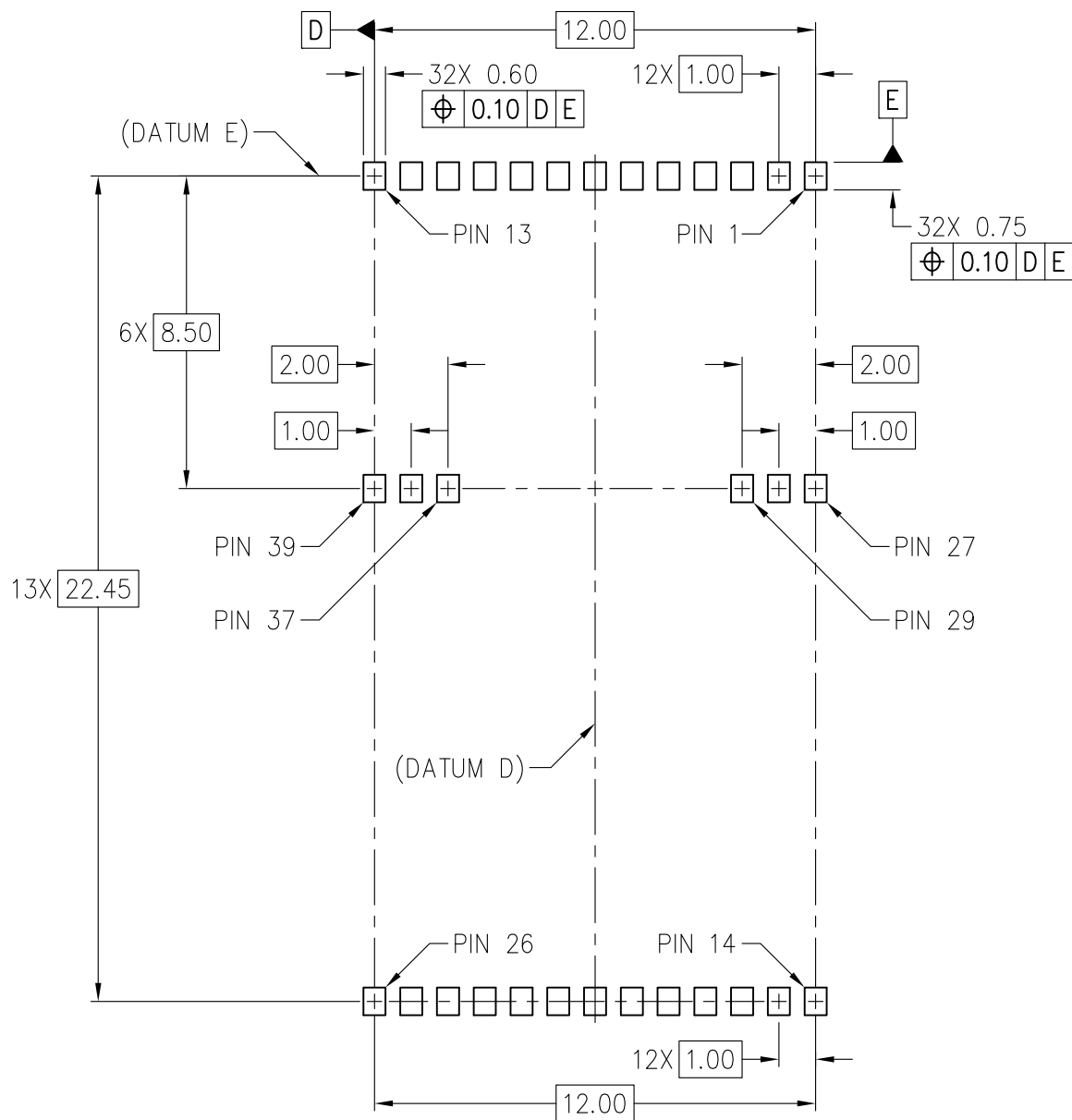
SECTION B-B



SECTION A-A



SECTION C-C
SLOT DIMENSION FOR MODULE.

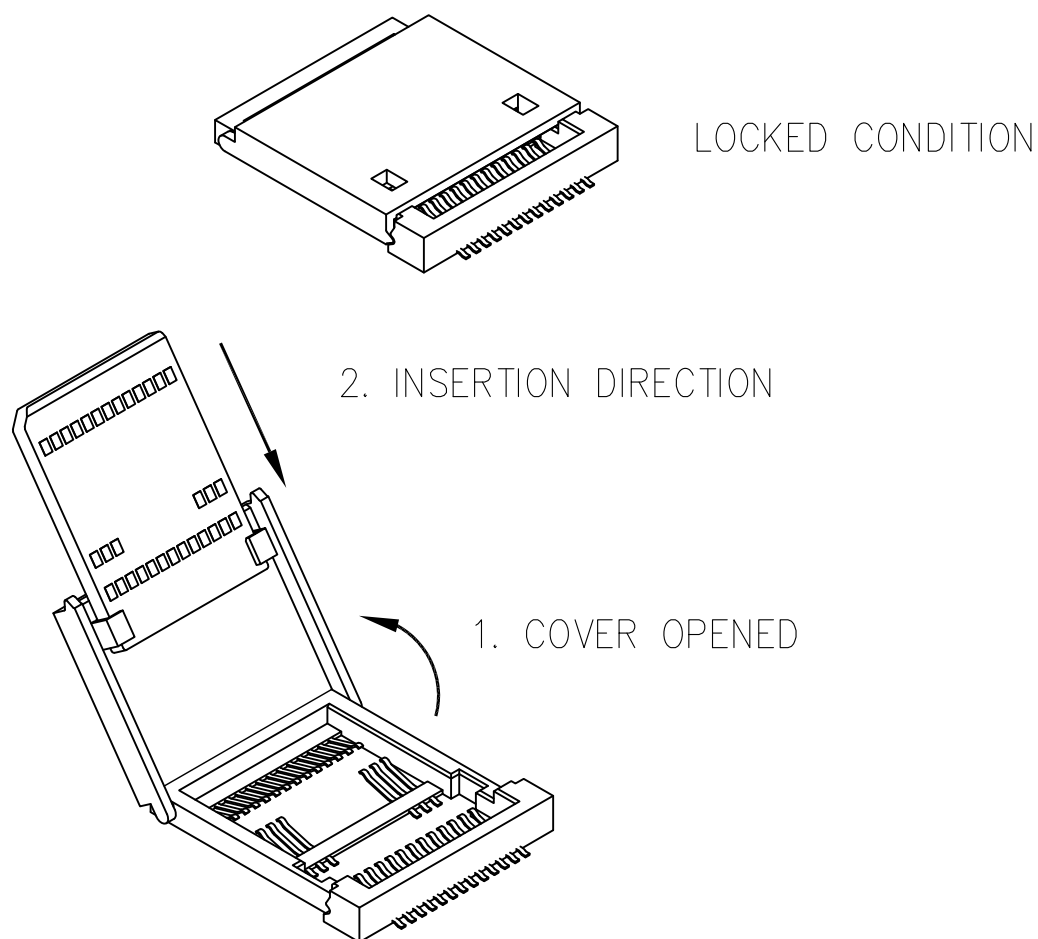


PCB TOP VIEW REFERENCE PCB FOOTPRINT (INFORMATIVE).

PIN 29 AND 37 ARE RESERVES, SO POPULATING IN CONNECTOR IS OPTIONAL.
PIN 27, 28, 38 AND 39 ARE GND, SO PAD PLACEMENT CAN BE ARBITRARY.

NOTES:

1. DIMENSIONING AND TOLERANCING PER ASME Y14.5–2009.
2. DIMENSIONS IN MILLIMETERS.
3. TOLERANCE ON ALL DIMENSIONS ± 0.10 UNLESS OTHERWISE SPECIFIED.
4. DATUMS A AND B ARE CONNECTOR DATUMS.
5. 1.5 MIN OF CROSS SECTION C–C IS THE SLOT HEIGHT OF THE MEMORY DEVICE.
6. PCB FOOTPRINT IS FOR REFERENCE. SET GND AND PROHIBITED AREAS AS NEEDED.
7. PIN 29 AND 37 ARE RESERVES, SO POPULATING CONTACT AND PCB FOOTPRINT PAD ARE OPTIONAL. PIN 27, 28, 38 AND 39 ARE GND, SO PLACEMENT OF PCB FOOTPRINT PAD CAN BE ARBITRARY.
8. THIS SOCKET IS DESIGNED TO MATE WITH M0–347.
9. HOW TO OPERATE THE CONNECTOR.



STP (3D) FILE RECORD

3D FILE NAMES MAY EXCEED LENGTH REQUIREMENTS FOR SOME SOFTWARE TOOLS.

STP FILE NAME	DATE	ITEM NUMBER
SO-031A_PMXC-NG32[39]_l1p0-R19p35x21p0Z3p2-N23p4T#	AUG 2022	14-209A

TASK GROUP CONTRIBUTORS

JAPAN AVIATION ELECTRONICS
KIOXIA CORPORATION

CHANGE RECORD

IF THE CHANGE INVOLVES ANY WORDS ADDED OR DELETED (EXCLUDING DELETION OF ACCIDENTALLY REPEATED WORDS), THE CHANGE IS TO BE INCLUDED BELOW. PUNCTUATION CHANGES MAY OR MAY NOT BE INCLUDED.

INITIAL ISSUE: A	DATE: AUGUST 2022	ITEM NUMBER: 14-209A
------------------	-------------------	----------------------

CHANGE RECORD HISTORY:

ISSUE: -	DATE: -	ITEM NUMBER: -
----------	---------	----------------

LOCATION:	CHANGED FROM:	CHANGED TO: